

# Project 'Smart Grass Production'

## Deelnemende partijen:

- Stimuland
- Gelders Agrarisch Jongeren Kontakt
- Hoeve Boveneind
- Netwerk Smart Fertilization
- HAS Hogeschool
- Barenbrug Holland



## HOOFD- EN DEELVRAGEN

*Hoofdvraag: 'Kan in het rivierkleigebied 20 ton droge stof gras per hectare per jaar geteeld worden, van goede*



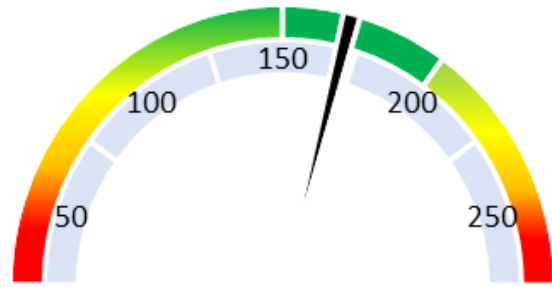


# Locatie proefvelden



Informatie van gebruikte percelen

### Soil life



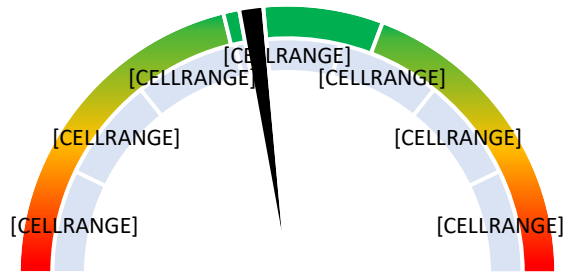
Advice: Good

### Suction pressure (pF)



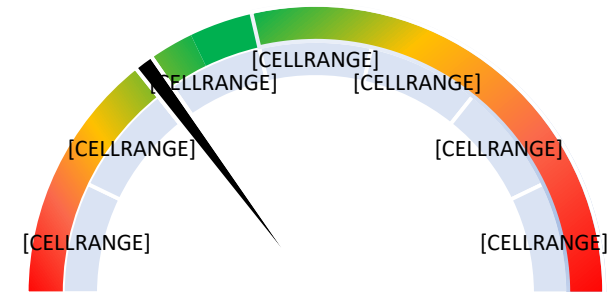
Advice: Good

### P plant available



Advice: Good

### pH



Advice: Calcify

## Input data perceel A

<b>Soil fertility</b>	pH	4
	Soil life	143
<b>Other soil fertility</b>	Clay-humus (CEC)	240
	Suction pressure	2,3
<b>Fertilization</b>	C/N-ratio	6
	P plant available	2,3
	C/S-ratio	48
	K plant available	63
	N-supplying power	137
	S-supplying power	15
<b>Other fertilization</b>	Ca plant available	54
	Mg plant available	351
	Na plant available	52
<b>Remaining</b>	Clay-humus (CEC)	240

<b>Fresh grass</b>	DS yield	228
	VEM	986
	DVE	77
	Sugar	113
	Structure value	1,9
	Digestion coefficient	83,9
<b>Silage data</b>	DS yield	475
	VEM	907
	DVE	70
	Sugar	75
	Structure value	3,1
	Digestion coefficient	79,1

<b>Soil density</b>		1701
<b>Botanical composition</b>		65%
<b>Organic matter</b>		6%
<b>Soil Temperature</b>		4,9